

### 13 - BODY

*Front door check strap — all 505 models*

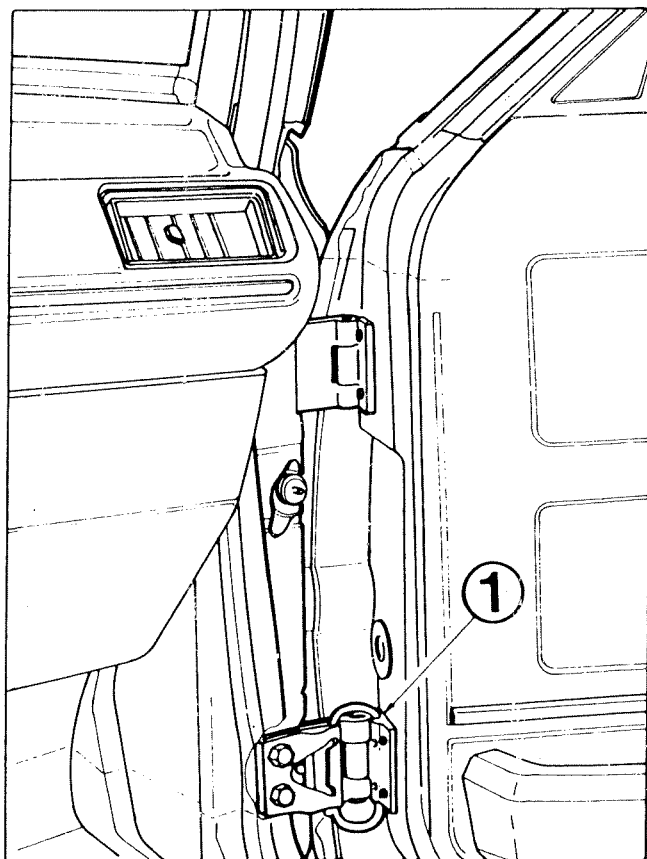
From serial number 551 . . . - 1 669 842,

505 models are fitted with 205 type front door check straps

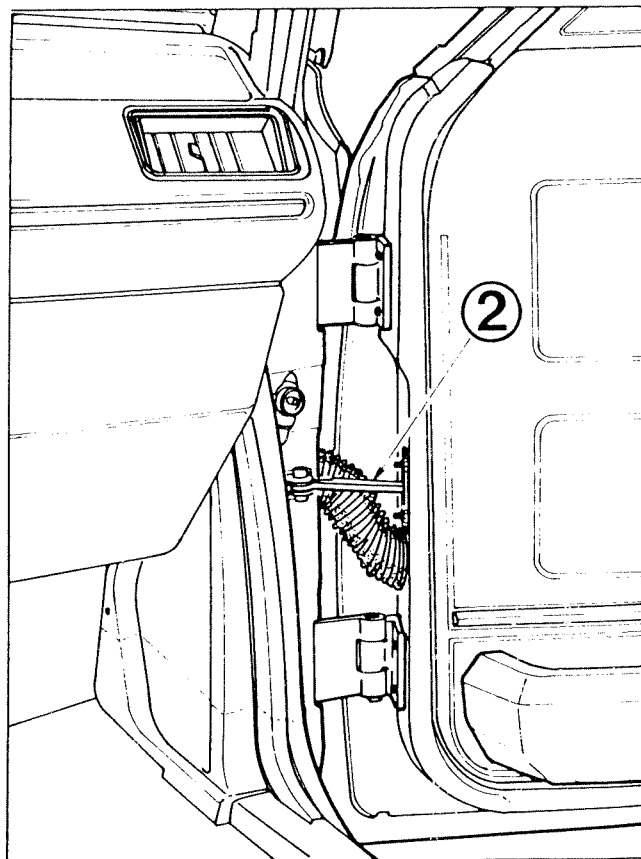
#### *Identification*

The front doors have a check strap fitted centrally at the front (2) instead of a check strap integral with the lower hinge (1).

**Earlier fitting**



**Later fitting**

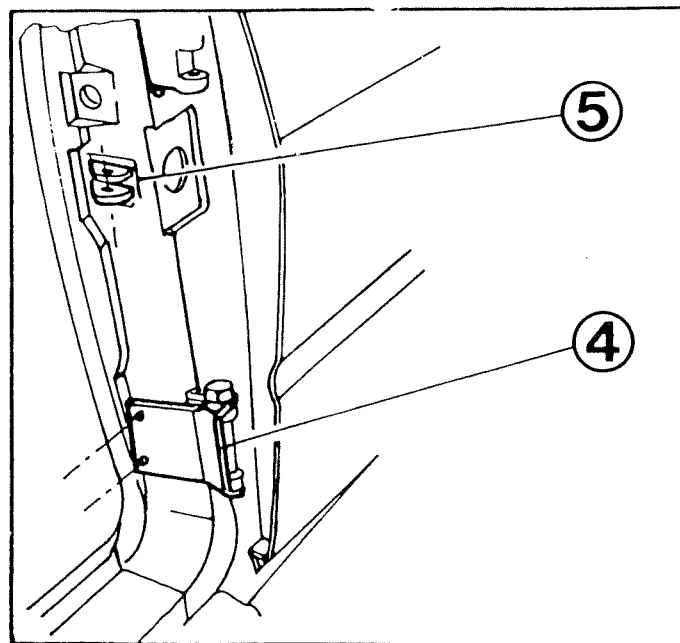
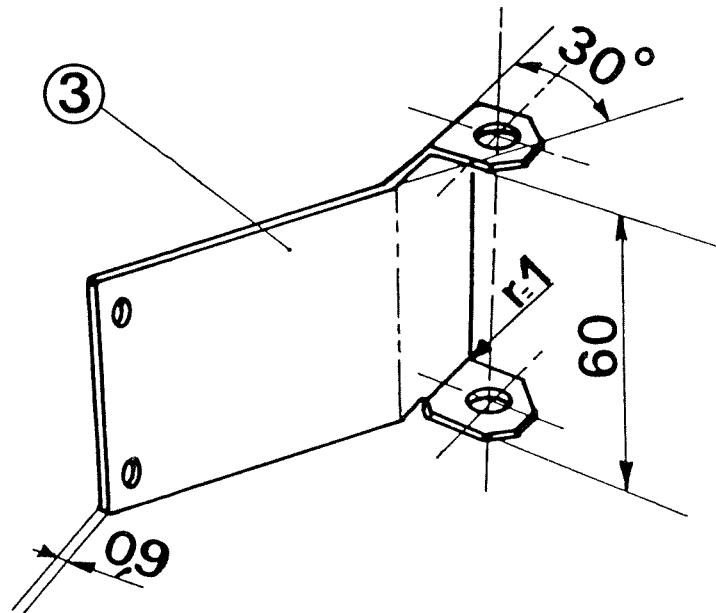


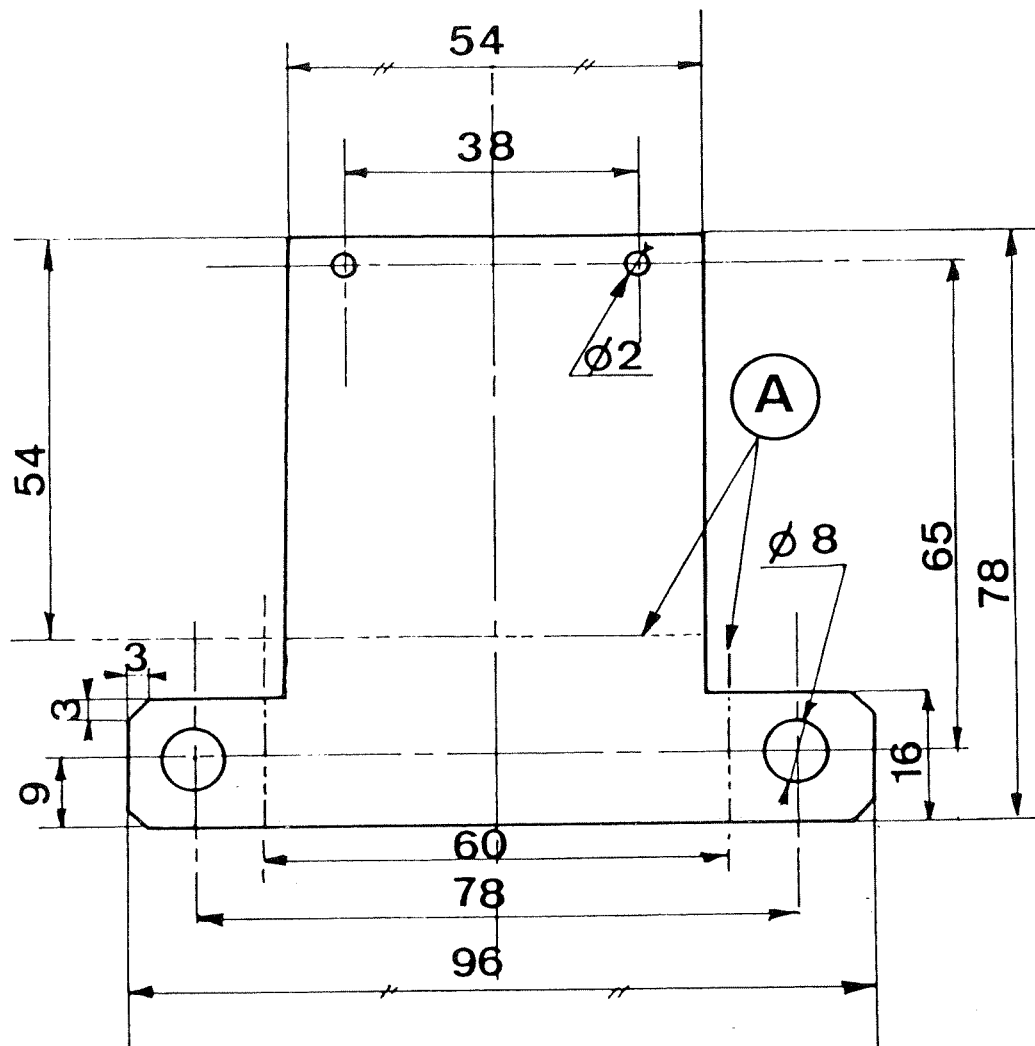
### Interchangeability

When stocks are exhausted, the Parts Division will supply only the later body shell and front pillars.

When fitting an earlier type door to a new body shell or changing a front pillar, it is necessary to :

- uncover the two tapped fixing holes for the check strap. To do so :
  - make up a jig in 20 gauge steel to the diagram (developed view attached)
  - using the jig, centre punch and spot face the two holes in the front pillar (4), using spot weld removing cutter (Part No. **9798.13**)
- Cut the check strap bracket (5) flush to the pillar
- Protect the edges.





A = Lines of bending